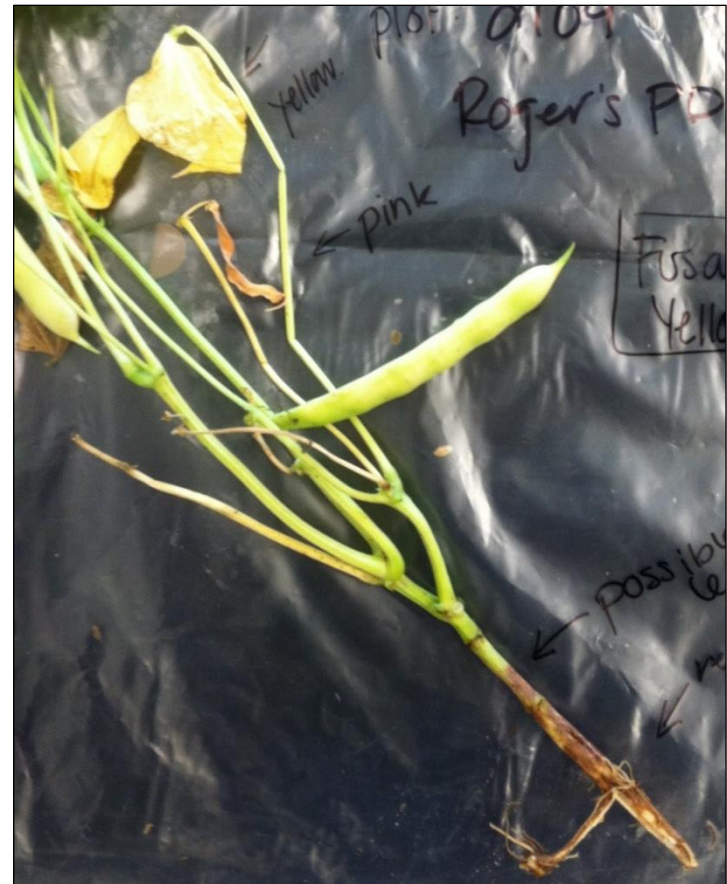


# Dry Bean Disease Symptoms

Sclerotinia (white mold)



Fusarium yellows  
(pink pods, yellow  
leaves, red root)



# Anthracnose



# Ascochyta caused by *Phoma exigua*



# Rust



## Potato Leafhopper Damage: “Hopperburn”



## Alternaria infected on left, healthy on right



## Hopperburn allows secondary diseases to colonize: Bacterial Bean Blight



## Bacterial Brown Spot

